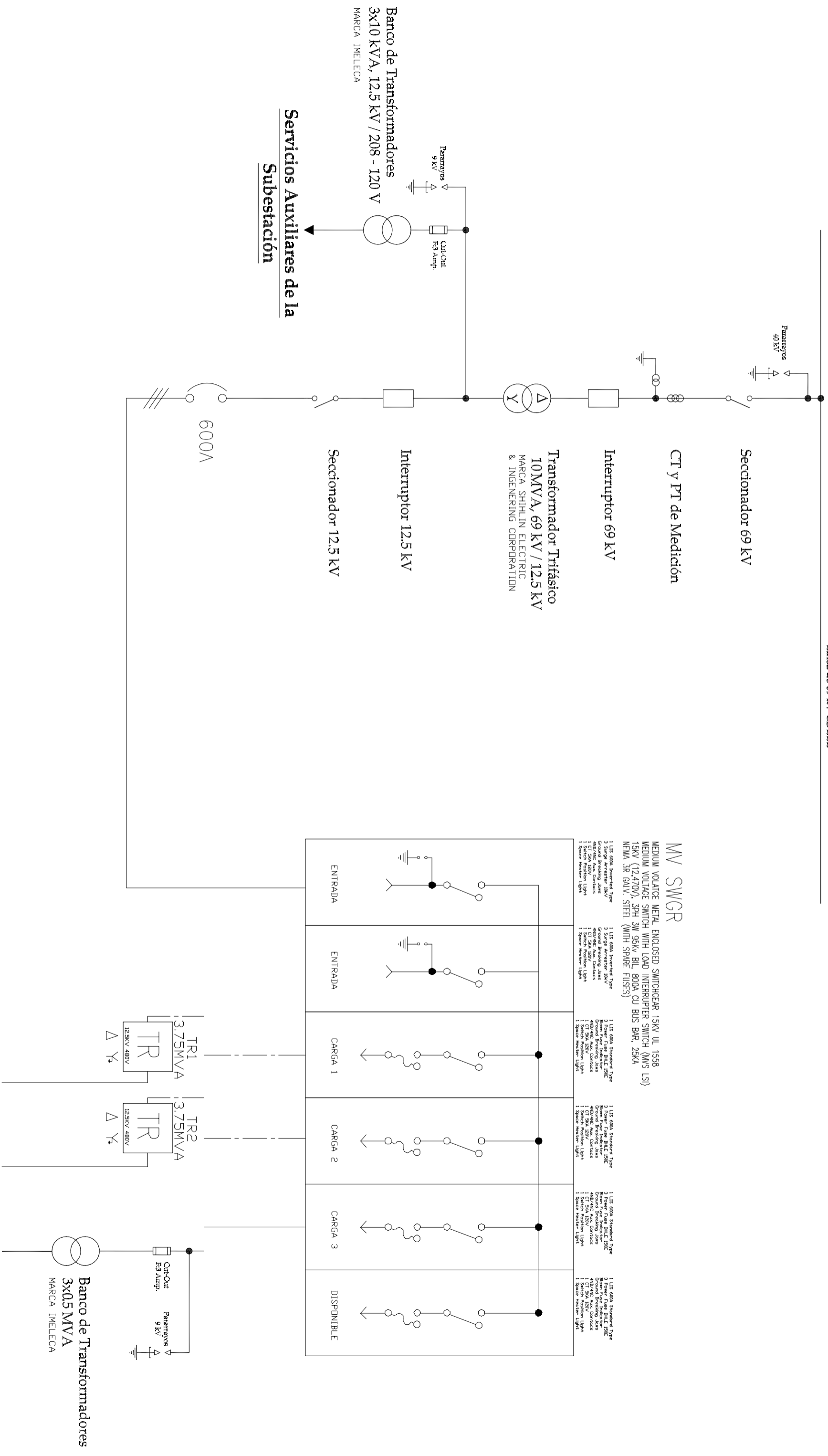


Línea de 69 kV CDHBE



Seccionador 69 kV

CT y PT de Medición

Interruptor 69 kV

Transformador Trifásico
10MVA, 69 kV / 12.5 kV
MARCA SHILIN ELECTRIC
& ENGINEERING CORPORATION

Interruptor 12.5 kV

Seccionador 12.5 kV

6000A

Servicios Auxiliares de la Subestación

Banco de Transformadores
3x10 kVA, 12.5 kV / 208 - 120 V
MARCA IMELECA

Banco de Transformadores
3x0.5 MVA
MARCA IMELECA

MV SWGR

MEDIUM VOLTAGE METAL ENCLOSED SWITCHGEAR 15KV UL 1558
MEDIUM VOLTAGE SWITCH WITH LOAD INTERRUPTER SWITCH (MVS 1S)
15KV (12,470V), 3PH 3W 95kV BIL, 800A CU BUS BAR, 25KA
NEMA 3R GALV. STEEL (WITH SPARE FUSES)

1 LIS 600A Inverted Type
1 Team Fuse Indicator
1 Beam Fuse Indicator
400/74C Aux. Contacts
1 CT 50A 150V
1 Switch Position Light
1 Space Heater Light

1 LIS 600A Inverted Type
1 Team Fuse Indicator
1 Beam Fuse Indicator
400/74C Aux. Contacts
1 CT 50A 150V
1 Switch Position Light
1 Space Heater Light

1 LIS 600A Standard Type
1 Team Fuse Indicator
1 Beam Fuse Indicator
400/74C Aux. Contacts
1 CT 50A 150V
1 Switch Position Light
1 Space Heater Light

1 LIS 600A Standard Type
1 Team Fuse Indicator
1 Beam Fuse Indicator
400/74C Aux. Contacts
1 CT 50A 150V
1 Switch Position Light
1 Space Heater Light

1 LIS 600A Standard Type
1 Team Fuse Indicator
1 Beam Fuse Indicator
400/74C Aux. Contacts
1 CT 50A 150V
1 Switch Position Light
1 Space Heater Light

